

CONCERTO FOR 2 VIOLINS (BACH)

The image shows a handwritten musical score for the Concerto for 2 Violins by J.S. Bach, specifically the bass clef part. The score is written on ten staves. The key signature is one flat (B-flat), and the time signature is 4/4. The music includes various rhythmic patterns, such as eighth and sixteenth notes, and rests. Performance markings include dynamics like *p* (piano) and *f* (forte), and articulation like accents (>) and slurs. Fingerings are indicated by numbers 1-4. Bowing or breath marks (v) are present. The score is annotated with circled numbers 10 and 18. A guitar-style fretboard diagram is visible in the lower right section, showing fingerings for notes on strings 1 through 4.



BACH Page 3

Handwritten musical score for a piece by Bach, page 3. The score consists of eight staves of music in bass clef. It includes various musical notations such as notes, rests, and accidentals, along with handwritten annotations like fingering numbers (e.g., 4, 3, 2, 3, 4, 3, 0, 1, 2, 3, 4), dynamics (p, f, low), and circled measure numbers (55, 63, E). The piece concludes with a double bar line and a fermata.

BACH Page 4

3 0 0 1 3 0

Handwritten musical score for a piece by Bach, consisting of six staves of bass clef notation. The first staff has a '3' above it. The second staff has a circled 'F' above it and a 'p' below it. The third staff has a 'b' above it. The fourth staff has a 'f' below it and various fingering numbers (1, 2, 3, 4, 2) above it. The fifth staff has 'low', 'III', and 'I' above it. The sixth staff has a fermata above it.

Largo

VIVALDI A MINOR CONCERTO

Handwritten musical score for Vivaldi's A Minor Concerto, consisting of three staves of bass clef notation. The first staff has a 'pp' below it. The second staff has 'low I' above it. The third staff has a '2' below it and 'ppp' below it.

Bach Double (for cello)

Handwritten musical notation for the first staff. It begins with a treble clef, a key signature of one flat (B-flat), and a 4/4 time signature. The music consists of several measures of sixteenth-note patterns, some beamed together. A dynamic marking 'p' (piano) is present, along with a '2' indicating a second ending or measure.

Handwritten musical notation for the second staff. It continues with sixteenth-note patterns and includes a '3' indicating a triplet.

Handwritten musical notation for the third staff. It features sixteenth-note patterns with accents and slurs.

Handwritten musical notation for the fourth staff, starting with a circled measure number '10'. It includes a dynamic marking 'f' (forte) and various sixteenth-note patterns.

Handwritten musical notation for the fifth staff, continuing the sixteenth-note patterns.

Handwritten musical notation for the sixth staff, including fingering numbers (1, 3, 4, 3, 4, 3) and a first ending bracket labeled 'I'.

Handwritten musical notation for the seventh staff, starting with a circled measure number '18'. It features sixteenth-note patterns with slurs and accents.

Handwritten musical notation for the eighth staff, including a section marked with a circled 'A' and a dynamic marking 'p'.

Handwritten musical notation for the ninth staff, including a circled measure number '30' and various sixteenth-note patterns.

Handwritten musical notation for the tenth staff, concluding the piece with sixteenth-note patterns and a '2' at the bottom.

Handwritten musical notation on a single staff, featuring bass clef, key signature of one flat, and various rhythmic values and accidentals.

Handwritten musical notation on a single staff, starting with a circled 'B' and containing a repeat sign.

Handwritten musical notation on a single staff, ending with a circled '46'.

Handwritten musical notation on a single staff, featuring various rhythmic patterns and accidentals.

Handwritten musical notation on a single staff, starting with a circled 'C'.

Handwritten musical notation on a single staff, including a circled '55' and a dynamic marking 'f'.

Handwritten musical notation on a single staff, featuring various rhythmic patterns and accidentals.

Handwritten musical notation on a single staff, starting with a circled 'D'.

Handwritten musical notation on a single staff, including a circled '63' and a dynamic marking 'p'.

Handwritten musical notation on a single staff, featuring various rhythmic patterns and accidentals.

# Bach Double (Viola)

-1-

Handwritten musical notation for the first staff. It begins with a treble clef, a key signature of one flat (B-flat), and a 4/4 time signature. The music consists of several measures of chords and melodic lines, with various accidentals and slurs. Above the staff, there are handwritten annotations: a plus sign and a sharp sign, a flat sign, a plus sign, a flat sign, a plus sign, and a flat sign.

Handwritten musical notation for the second staff. It continues the piece with similar chordal and melodic structures. Above the staff, there are handwritten annotations: a plus sign, a flat sign, a plus sign, a flat sign, and a plus sign.

Handwritten musical notation for the third staff. The notation includes slurs and accents over the notes. Above the staff, there is a handwritten annotation: a plus sign.

Handwritten musical notation for the fourth staff. It features complex chordal textures. Above the staff, there are handwritten annotations: a plus sign and a sharp sign, a flat sign, a plus sign, a flat sign, and a plus sign.

Handwritten musical notation for the fifth staff. It includes slurs and accents. Above the staff, there are handwritten annotations: a flat sign, a sharp sign, a plus sign, a flat sign, and a plus sign.

Handwritten musical notation for the sixth staff. It contains several measures of music. Above the staff, there is a handwritten annotation: a flat sign. The number '18' is written above the staff towards the right side.

Handwritten musical notation for the seventh staff. It features slurs and accents. Above the staff, there are handwritten annotations: a plus sign, a flat sign, a plus sign, a flat sign, and a plus sign.

Handwritten musical notation for the eighth staff. It begins with a circled letter 'A' in the first measure. The notation consists of rhythmic patterns. Below the staff, there is a handwritten annotation: a plus sign.

Handwritten musical notation for the ninth staff. It includes slurs and accents. Above the staff, there are handwritten annotations: a plus sign and a sharp sign, a flat sign, a plus sign, a flat sign, and a plus sign.

Handwritten musical notation for the tenth staff. It features complex chordal textures. Above the staff, there are handwritten annotations: a flat sign, a plus sign, a flat sign, a plus sign, and a flat sign. Below the staff, there is a handwritten annotation: a plus sign.

Handwritten musical notation on a single staff in B-flat major. It begins with a complex chordal introduction featuring several accidentals (sharps and naturals) and a melodic line.

(B) 38

Handwritten musical notation on a single staff in B-flat major, starting with a piano (*p*) dynamic and a rhythmic pattern of eighth notes.

Handwritten musical notation on a single staff in B-flat major, starting with a forte (*f*) dynamic and a melodic line with a slur.

Handwritten musical notation on a single staff in B-flat major, starting with a piano (*p*) dynamic and a melodic line with a slur.

Handwritten musical notation on a single staff in B-flat major, featuring a melodic line with a slur and a sharp sign.

Handwritten musical notation on a single staff in B-flat major, starting with a forte (*f*) dynamic and a melodic line with a slur.

Handwritten musical notation on a single staff in B-flat major, starting with a melodic line and a sharp sign.

Handwritten musical notation on a single staff in B-flat major, featuring a melodic line with a slur and a sharp sign.

Handwritten musical notation on a single staff in B-flat major, starting with a melodic line and a sharp sign.

Handwritten musical notation on a single staff in B-flat major, starting with a melodic line and a sharp sign.

(E)

f

p

(F)

p

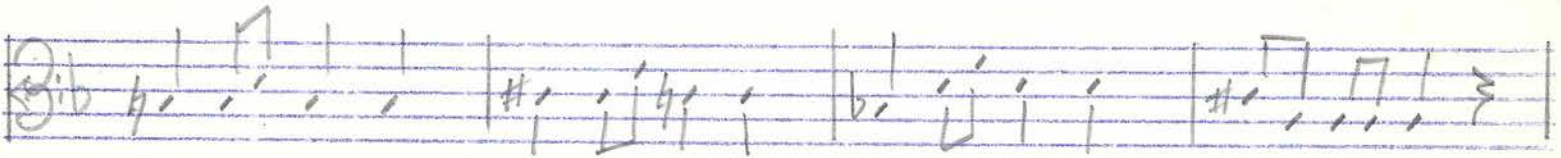
:

f

tr

Largo (mute)

Vivaldi 2<sup>no</sup> mot. (for Viola)



(for Cello)

