

Violin I

CHRISTMAS MEDLEY

K. Andreas

Latin Hymn: O Come, All Ye Faithful

Musical notation for the first piece, 'Latin Hymn: O Come, All Ye Faithful'. The score is written on a single staff in treble clef with a key signature of two sharps (F# and C#) and a 4/4 time signature. The music begins with a dynamic marking of *f* (forte) and a *v* (vibrato) symbol above the first note. The melody consists of quarter and eighth notes, with some notes beamed together. A *mf* (mezzo-forte) marking appears later in the piece, and a *mp* (mezzo-piano) marking is used for a section with longer note values. The piece concludes with a *v* symbol above the final note.

French: The First Noel

Piano Solo

Musical notation for the second piece, 'French: The First Noel'. The score is written on a single staff in treble clef with a key signature of two sharps (F# and C#) and a 3/4 time signature. The piece begins with a *f* (forte) dynamic marking. A *Piano Solo* instruction is written below the staff. The music features a mix of eighth and quarter notes. Measure numbers 31 and 39 are indicated above the staff. The piece ends with a *v* (vibrato) symbol above the final note.

English: Deck The Halls

Musical notation for the first system of 'Deck The Halls'. It features a treble clef, a key signature of one sharp (F#), and a 4/4 time signature. The tempo marking 'Faster' is written below the staff. The melody consists of eighth and quarter notes, with some beamed eighth notes.

Musical notation for the second system of 'Deck The Halls', continuing the melody from the first system.

Musical notation for the first system of 'O Little Town of Bethlehem'. It features a treble clef, a key signature of one sharp (F#), and a 2/4 time signature. The tempo marking 'ritard' is written below the staff, followed by a double bar line and a '2' indicating a two-measure rest. The dynamic marking 'pp' (pianissimo) is written below the staff. The tempo marking 'American: O Little Town of Bethlehem' is written above the staff.

Musical notation for the second system of 'O Little Town of Bethlehem', continuing the melody.

Musical notation for the third system of 'O Little Town of Bethlehem'. The dynamic marking 'mp' (mezzo-piano) is written below the staff.

Musical notation for the fourth system of 'O Little Town of Bethlehem'. It includes a tempo marking '80' and a note value 'd = d'. The word 'OVER' is written at the end of the staff. Below the staff, there are four bass clefs with vertical lines, labeled '(Bass)'.

Musical notation for the first system of 'Little Drummer Boy'. It features a treble clef, a key signature of one sharp (F#), and a common time signature (C). The tempo marking 'rit.' is written above the staff, followed by a double bar line and a '2' indicating a two-measure rest. The dynamic marking 'mf' (mezzo-forte) and the tempo marking 'Stately' are written below the staff. The tempo marking 'spicc.' (spiccato) is written below the staff. The number '84' is written above the staff.

Musical notation for the second system of 'Little Drummer Boy', continuing the melody.

Czech: Little Drummer Boy

2 84 \square Stately

The image shows a handwritten musical score for the piece 'Little Drummer Boy'. The score is written on ten staves. The first staff begins with a treble clef, a key signature of one sharp (F#), and a 2/4 time signature. The tempo is marked 'Stately' and the starting measure is 84. The first staff contains a whole note chord, followed by a series of eighth and sixteenth notes with slurs and accents. A dynamic marking of *p* (piano) is placed below the first staff. The second staff continues the melodic line with slurs and accents, marked with measure number 92. The third staff features a similar melodic pattern with slurs and accents. The fourth staff shows a rhythmic pattern of eighth notes with slurs and accents. The fifth staff continues the melodic line with slurs and accents. The sixth staff begins with a dynamic marking of *f* (forte) and a tempo marking of 'Legato'. The seventh staff continues the melodic line with slurs and accents, marked with measure number 118. The eighth staff features a melodic line with slurs and accents, marked with measure number 124 and a dynamic marking of *mp* (mezzo-piano). The ninth staff continues the melodic line with slurs and accents, marked with measure number 128. The tenth staff concludes the piece with a final chord and a drum part marked 'Drum 4'.

Violin II

CHRISTMAS MEDLEY

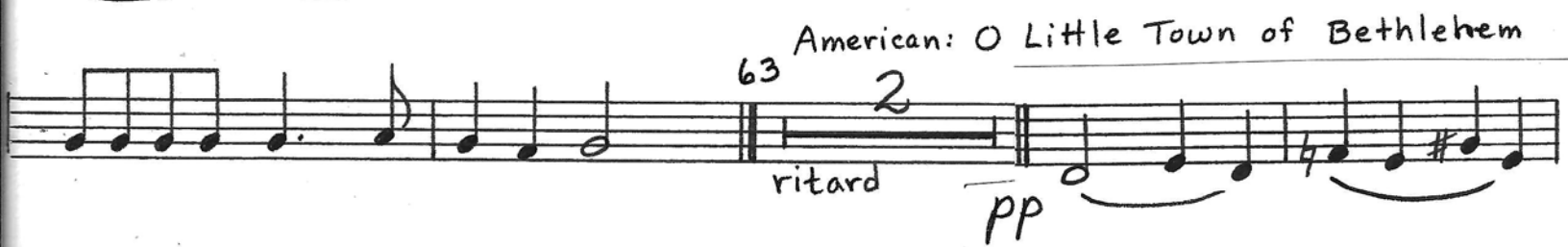
K. Andreas

Latin Hymn: O Come, All Ye Faithful

Vln I
(1)

French: The First Noel

English: Deck The Halls



OVER

110 Legato

Handwritten musical score for a piano piece, measures 110-124. The score is written on a grand staff with a treble clef and a key signature of one sharp (F#). The tempo is marked "110" and the articulation is "Legato". The dynamics are marked "f" (forte) and "mp" (mezzo-piano). The music features a melodic line with various rhythmic patterns, including eighth and sixteenth notes, and rests. There are several slurs and phrasing marks throughout the piece. A double bar line is present at measure 118. The score ends with a fermata over the final note of measure 124. The bottom of the page shows several empty staves.

f

118

v

24

28

mp

Drum

4

Viola

Triangle, Drum

CHRISTMAS MEDLEY

K. Andreas

Latin Hymn: O Come, All Ye Faithful

Musical notation for the Latin Hymn 'O Come, All Ye Faithful'. The score is written on five staves. The key signature is two sharps (F# and C#), and the time signature is 3/4. The notation includes various notes, rests, and dynamic markings such as *f*, *mp*, and *f*. There are also performance instructions like 'Vln I (!)' and 'solo'. Measure numbers 7, 9, 17, and 31 are indicated.

French: The First Noel

Musical notation for the French song 'The First Noel'. The score is written on five staves. The key signature is two sharps (F# and C#), and the time signature is 3/4. The notation includes various notes, rests, and dynamic markings such as *mf* and *f*. There are also performance instructions like 'Piano Solo' and 'solo'. Measure numbers 7, 31, and 39 are indicated.

English: Deck The Halls

Musical notation for the English song 'Deck The Halls'. The score is written on five staves. The key signature is two sharps (F# and C#), and the time signature is 4/4. The notation includes various notes, rests, and dynamic markings such as *f*. There are also performance instructions like 'Faster' and 'C'. Measure number 47 is indicated.

Musical score for the first section, featuring a treble clef and a key signature of one sharp (F#). The music consists of two staves. The first staff contains a melodic line with a fermata over a dotted quarter note. The second staff contains a bass line with a fermata over a dotted quarter note. A tempo marking of 55 is written above the second staff, and a dynamic marking of *f* (forte) is written below it.

3 American: O Little Town of Bethlehem

Musical score for the second section, titled "American: O Little Town of Bethlehem". It features a treble clef and a key signature of one sharp. The music is written on two staves. The first staff begins with a *ritard* (ritardando) marking and a dynamic marking of *mp* (mezzo-piano). The second staff ends with a dynamic marking of *mf* (mezzo-forte).

Musical score for the third section, continuing the melody from the previous section. It features a treble clef and a key signature of one sharp. The music is written on a single staff.

Czech: Little Drummer Boy

Musical score for the fourth section, titled "Czech: Little Drummer Boy". It features a treble clef and a key signature of one sharp. The music is written on a single staff. A tempo marking of 80 is written above the staff, and a dynamic marking of *ritard* is written below it. A "Bass Cue" is indicated with a circled *C* below the staff. A measure rest of 2 is written above the staff.

Musical score for the fifth section, continuing the melody. It features a treble clef and a key signature of one sharp. The music is written on a single staff. A tempo marking of 92 is written above the staff. A measure rest of 3 is written above the staff. An annotation "go to triangle" with an arrow points to a specific measure.

Musical score for the sixth section, continuing the melody. It features a treble clef and a key signature of one sharp. The music is written on a single staff. A tempo marking of 98 is written above the staff. A measure rest of 2 is written above the staff. An annotation "go to Drum!" is written above the staff.

Drum part for the seventh section. It features a bass clef and a key signature of one sharp. The music is written on a single staff. A tempo marking of 110 is written above the staff. A measure rest of 14 bars is indicated with a dashed line and the text "fill 14 bars". A dynamic marking of *mf* (mezzo-forte) is written below the staff. A measure rest of 2 is written above the staff. A tempo marking of 128 is written above the staff. A measure rest of 2 is written above the staff. A measure rest of 2 is written above the staff. A measure rest of 4 bars is written above the staff. The word "Drum" is written at the beginning of the staff.