

# Violin I

## CHRISTMAS MEDLEY

K. Andreas

Latin Hymn: O Come, All Ye Faithful

Musical notation for the first section of the medley, "Latin Hymn: O Come, All Ye Faithful". The score is written for Violin I in treble clef, with a key signature of two sharps (F# and C#) and a 4/4 time signature. The music begins with a dynamic marking of *f* (forte) and a *v* (accents) marking above the first note. The melody consists of quarter and eighth notes, with some notes beamed together. A *mf* (mezzo-forte) marking appears later in the piece, and a *mp* (mezzo-piano) marking is used for a section with sustained notes. The section concludes with a *v* marking above the final note.

French: The First Noel

Piano Solo

Musical notation for the second section of the medley, "French: The First Noel". The score is written for Violin I in treble clef, with a key signature of two sharps (F# and C#) and a 3/4 time signature. The section begins with a *f* (forte) dynamic marking and a *v* (accents) marking above the first note. A *mf* (mezzo-forte) marking is used for a section starting at measure 31. The melody features eighth and quarter notes, with some notes beamed together. A *f* marking is used again for a section starting at measure 39. The section concludes with a *v* marking above the final note.

English: Deck The Halls

Musical notation for the first staff of "Deck The Halls". It begins with a treble clef, a key signature of one sharp (F#), and a 4/4 time signature. The tempo marking "Faster" is written below the staff.

Musical notation for the second staff of "Deck The Halls".

Musical notation for the third staff of "Deck The Halls". A large number "4" is written above the staff, indicating a measure rest.

Musical notation for the fourth staff, marking the beginning of "American: O Little Town of Bethlehem". It includes a measure rest of 63 measures, a tempo change to 2/4, and a dynamic marking of "pp".

Musical notation for the fifth staff of "O Little Town of Bethlehem".

Musical notation for the sixth staff of "O Little Town of Bethlehem". It includes a dynamic marking of "mp".

Musical notation for the seventh staff of "O Little Town of Bethlehem". It includes a tempo marking of 80, a note value of a dotted quarter (♩ = ̣), and the word "OVER" written at the end of the staff.

Musical notation for the eighth staff, marking the beginning of "Czech: Little Drummer Boy". It includes a measure rest of 84 measures, a key signature of one sharp (F#), a common time signature (C), and dynamic markings of "mf" and "Stately".

Musical notation for the ninth staff of "Little Drummer Boy". It includes a dynamic marking of "spicc." and a bass line with four measures of rests.

Czech: Little Drummer Boy

2

84  $\square$  Stately

*p*

92  $\square$

110 Legato

*f*

118  $\square$

124

128

*mp*

Drum 4

Violin II

# CHRISTMAS MEDLEY

K. Andreas

Latin Hymn: O Come, All Ye Faithful

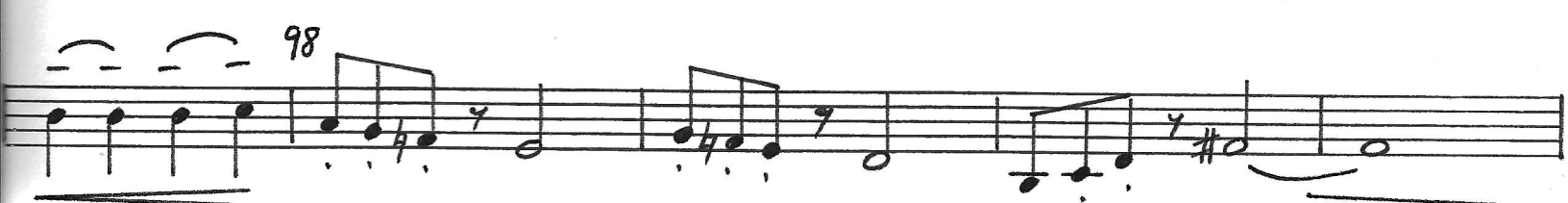
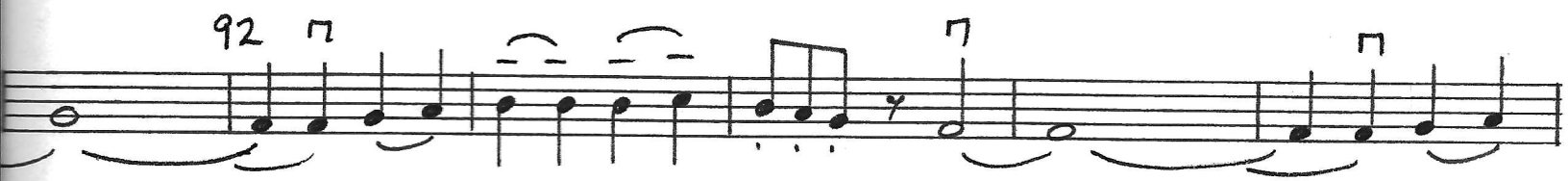
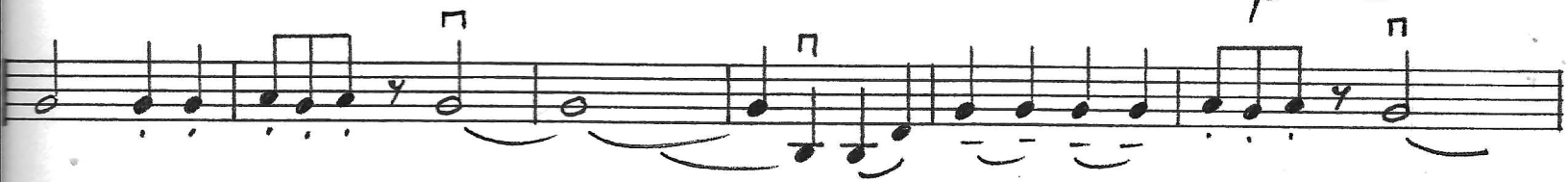
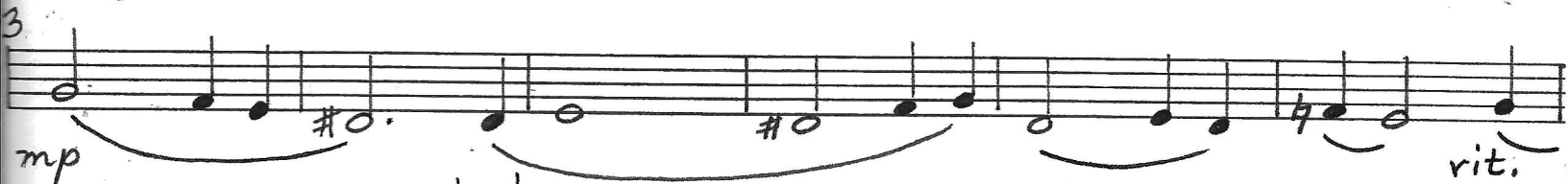
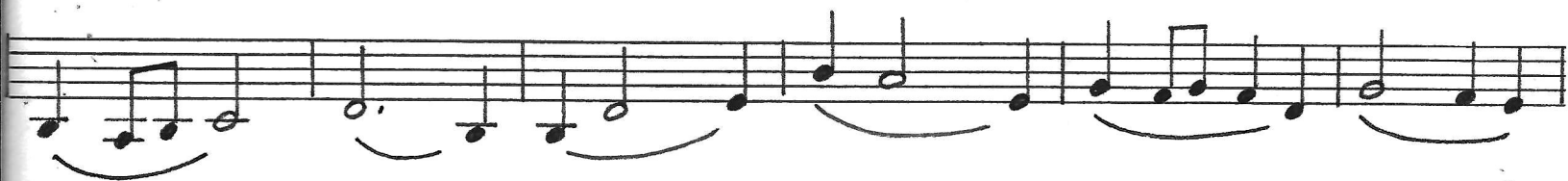
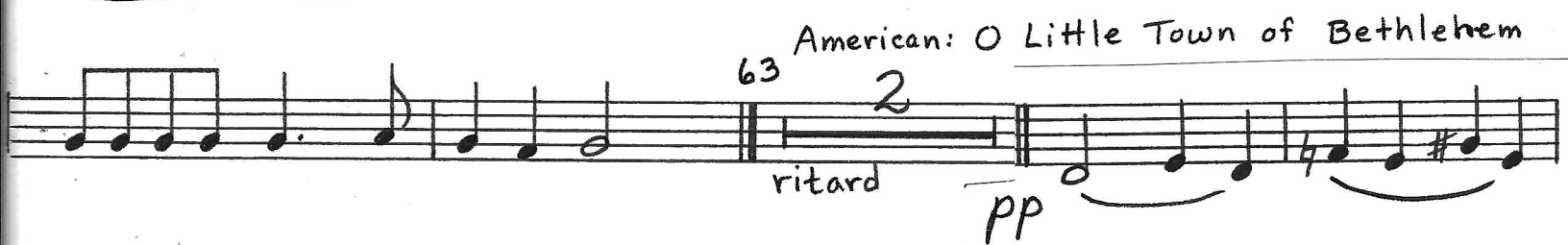
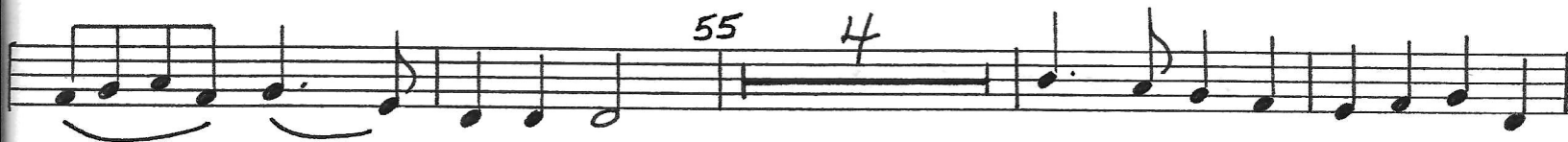
Vln I  
(1)

French: The First Noel

Piano Solo

English: Deck The Halls

Faster



OVER

110 Legato

*f*

118

V

24

28

*mp*

Drum 4/4

# Viola

Triangle, Drum

## CHRISTMAS MEDLEY

K. Andreas

Latin Hymn: O Come, All Ye Faithful

Handwritten musical notation for the Latin Hymn "O Come, All Ye Faithful". The score is written on five staves. The key signature is two sharps (F# and C#), and the time signature is 4/4. The notation includes various musical symbols such as notes, rests, slurs, and dynamic markings. Handwritten annotations include "Vln I (!)" above the first staff, "f" below the first staff, "mp" below the third staff, and "solo" below the fourth staff. Measure numbers 7, 9, 17, and 31 are marked above the staves.

French: The First Noel

Handwritten musical notation for the French song "The First Noel". The score is written on three staves. The key signature is two sharps (F# and C#), and the time signature is 3/4. The notation includes notes, rests, and dynamic markings. Handwritten annotations include "Piano Solo" below the first staff, "mf" below the second staff, and "f" below the third staff. Measure numbers 7, 31, and 39 are marked above the staves.

47 English: Deck The Halls

Handwritten musical notation for the English song "Deck The Halls". The score is written on one staff. The key signature is two sharps (F# and C#), and the time signature is 4/4. The notation includes notes and dynamic markings. Handwritten annotations include "Faster" below the staff and a "C" time signature above the staff.

Musical notation for the first section, measures 53-62. The key signature is one sharp (F#) and the time signature is 3/8. The music consists of a single melodic line with various note values and rests. A dynamic marking of *f* (forte) is present at measure 55.

63 American: O Little Town of Bethlehem

Musical notation for the second section, measures 63-72. The key signature is one sharp (F#) and the time signature is 3/8. The music consists of a single melodic line. Dynamic markings include *ritard* at the beginning, *mp* (mezzo-piano) at measure 65, and *mf* (mezzo-forte) at measure 72.

73

Musical notation for the third section, measures 73-82. The key signature is one sharp (F#) and the time signature is 3/8. The music consists of a single melodic line.

Czech: Little Drummer Boy

Musical notation for the fourth section, measures 83-91. The key signature is one sharp (F#) and the time signature is 3/8. The music consists of a single melodic line. A dynamic marking of *ritard* is present at the beginning. A tempo marking of *♩ = ♩ 80* is written above the staff. A *Bass Cue* is indicated with a circled 'C' and a slash. A measure rest of 2 bars is shown at the end of the section.

94

Musical notation for the fifth section, measures 94-97. The key signature is one sharp (F#) and the time signature is 3/8. The music consists of a single melodic line. An annotation *go to triangle* with an arrow points to measure 94. Measure rests of 3 bars are shown at measures 95 and 97.

Musical notation for the sixth section, measures 98-101. The key signature is one sharp (F#) and the time signature is 3/8. The music consists of a single melodic line. Measure rests of 2 bars are shown at measures 98 and 101. An annotation *go to Drum!* is present above measure 101.

Drum notation for the seventh section, measures 102-110. The key signature is one sharp (F#) and the time signature is 3/8. The notation shows rhythmic patterns for the right hand (R) and left hand (L). A tempo marking of *110* is present. A *fill 14 bars* is indicated with a dashed line. Dynamic markings include *p* (piano) and *mf* (mezzo-forte). Measure rests of 3 bars are shown at measures 102 and 105. A measure rest of 2 bars is shown at measure 110.

Drum notation for the eighth section, measures 111-114. The key signature is one sharp (F#) and the time signature is 3/8. The notation shows rhythmic patterns for the right hand (R) and left hand (L). A tempo marking of *128* is present. Measure rests of 2 bars are shown at measures 111 and 112. The section ends with a *4 bars* rest.