

SUZUKI VIOLIN SCHOOL

VIOLA PART

VOL. **1**

including duet parts

edited by Kay Andreas

NORTHEAST NEW JERSEY SUZUKI STRING FESTIVAL 1975
 Saturday, May 3, Montclair State College, Montclair

PROGRAM

<u>Level Number</u>	<u>Title</u>	<u>Tempo</u>	<u>Introduction</u>
1 (Book 6)	Ricercar Allegro	quarter = 100 slower section = 80	none
2 (Book 5)	First Violins Bach Double Concerto	quarter = 80	none
3	Veracini Giga	dotted quarter = 80	none
4	Weber Country Dance	quarter = 138	none
5	Vivaldi A minor Concerto: Second Movement	eighth = 58	none
6 (Book 4)	Bach Double: Second Violin	quarter = 80	none
7	Vivaldi A minor Concerto: First Movement	quarter = 88	none
8 (Book 3)	Bach Bourree	half note = 69	none
9	Humoresque	eighth = 100 slower section = 84	none
10	Bach Gavotte in G Minor	half note = 60	
<u>Cellists and Violists:</u>			
C 1 V 1	Webster Scherzo	quarter = 120 slower section at 80	as written
C 2 V 2	Schubert Beresuse	quarter = 100 100	none
C 3 V 3	Breval Allegro	quarter = 108	none
C 4 V 4	Purcell Rigadcon	quarter = 120	bars 21-24
11 (Book 2)	Lully Gavotte	half note = 72	none
12	The Two Grenadiers	quarter = 116 slower section at 104	as written
13	Long, Long Ago	quarter = 92	last 2 bars
14	Hunter's Chorus	quarter = 92	last 4 bars
15 (Book 1)	The Happy Farmer	quarter = 96	last 2 bars & pick up
16	Bach Minuet No. 1	quarter = 112	last 4 bars
17	Perpetual Motion	quarter = 104	3rd & 4th bars
18	Suzuki Allegro	quarter = 120	first 2 bars
19	May Song	quarter = 116	first 4 bars
20	O Come, Little Children	quarter = 72	last 4 bars & pick up
21	Go Tell Aunt Rhody	quarter = 84	first 2 bars
22	Song of the Wind	quarter = 88	last 4 bars
23	Lightly Row	half note = 84	first 4 bars
24	Twinkle Variations	quarter = 96	first 2 bars each

 SUZUKI STRING FESTIVAL 1975 REGISTRATION FORM -- Detach and return one for each performer.

Print Performer's Name _____

Level Number _____ Title _____

Teacher's Name _____

Circle instrument: VIOLIN VIOLA CELLO STRING BASS

Performer's Age on May 3: _____ Return with \$1.00 to your teacher

SUZUKI FESTIVAL

Twinkle

0 0 2 2 3 3 2 | 3 3 2 2 1 1 0
III. pos.

4 4 3 3 2 2 1 | 4 4 3 3 2 2 1

Play first line again

Rhythm Variations:

① ② ③ ④

Lightly Row

4 2 2 3 1 1 0 1 2 3 4 4 4

4 2 2 2 3 1 1 1 0 2 4 4 2 2 2

1 1 1 1 1 2 3 2 2 2 2 2 3 4

play second line again

Song of the Wind

Handwritten musical notation for the first system of "Song of the Wind". It features a treble clef, a key signature of two sharps (F# and C#), and a 4/4 time signature. The melody consists of quarter notes and half notes. Below the staff are the following fingering numbers: 0, 1, 0, 1, 0, 0, 0, 2, 0, 0, 0, 0, 2, 0, 0.

Handwritten musical notation for the second system of "Song of the Wind". It includes a treble clef, two sharps, and a 4/4 time signature. The melody continues with quarter notes and half notes. Below the staff are the following fingering numbers: 2, 1, 1, 1, 1, 0, 0, 0, 1, 1, 2, 1, 0, 0, 2, 1, 1, 2, 1, 0.

Go Tell Aunt Rhody

Handwritten musical notation for the first system of "Go Tell Aunt Rhody". It features a treble clef, two sharps, and a 4/4 time signature. The melody includes quarter notes, eighth notes, and a triplet. Below the staff are the following fingering numbers: 0, 1, 0, 1, 1, 0, 2, 2, 1, 0, 0, 1, 1, 0.

Handwritten musical notation for the second system of "Go Tell Aunt Rhody". It includes a treble clef, two sharps, and a 4/4 time signature. The melody continues with quarter notes and eighth notes. Below the staff are the following fingering numbers: 0, 0, 1, 2, 2, 3, 3, 2, 1, 0, 0, 0, 1, 2, 2, 3, 3, 2. The system is marked with a forte *f* dynamic at the beginning and a piano *P* dynamic later. The instruction "play first line again" is written at the end of the system.

O Come, Little Children

Handwritten musical notation for the first system of "O Come, Little Children". It features a treble clef, two sharps, and a 4/4 time signature. The melody consists of quarter notes and half notes. Below the staff are the following fingering numbers: 0, 0, 1, 2, 2, 3, 3, 2, 1, 0, 0, 0, 1, 2, 2, 3, 3, 2. The system is marked with a piano *P* dynamic. The instruction "play whole song twice" is written at the end of the system.

May Song

Musical notation for the first line of 'May Song'. It features a treble clef, a key signature of two sharps (F# and C#), and a 4/4 time signature. The melody consists of quarter notes and eighth notes, with a fermata over the final note.

Musical notation for the second line of 'May Song'. It continues the melody from the first line, including a dynamic marking of *f* (forte) at the beginning and *p* (piano) later in the line.

play first line again

Suzuki Allegro

Musical notation for the first line of 'Suzuki Allegro'. It features a treble clef, a key signature of two sharps (F# and C#), and a 4/4 time signature. The melody is composed of quarter notes and eighth notes, ending with a double bar line and repeat sign.

Musical notation for the second line of 'Suzuki Allegro'. It continues the melody from the first line, including a dynamic marking of *f* (forte) at the beginning and *p* (piano) later in the line.

play first line once

Perpetual Motion

play whole song twice

Musical notation for the first line of 'Perpetual Motion'. It features a treble clef, a key signature of two sharps (F# and C#), and a 4/4 time signature. The melody is composed of quarter notes and eighth notes, ending with a double bar line and repeat sign.

Musical notation for the second line of 'Perpetual Motion'. It continues the melody from the first line, including a dynamic marking of *f-p* (forte-piano) at the beginning and *f* (forte) later in the line.

Musical notation for the third line of 'Perpetual Motion'. It continues the melody from the second line, including a dynamic marking of *f* (forte) at the beginning and *f-p* (forte-piano) later in the line.

play first line again twice

No. 1

TWINKLE THEME

2 2 3 3 2
Third Position

A A 3 3 2 2 1 1 A
4 3 2 1 4 3 2 1
A A Third Position 3 2 1 A

Duet

A A 2 2 3 3 2 1 1 A A 1 1 A

2 2 1 1 A A 1 2 2 1 1 A A 1

No. 2 Lightly Row

Handwritten musical score for "No. 2 Lightly Row". The score is written in treble clef, 3/4 time, and key of D major (two sharps). It consists of four staves. The first two staves have a treble clef and a key signature of two sharps. The last two staves have a bass clef and a key signature of two sharps. The notation includes fingerings (1-4) and some chord markings (A).

Duet

Handwritten musical score for "Duet". The score is written in treble clef, 3/4 time, and key of D major (two sharps). It consists of four staves. The first two staves have a treble clef and a key signature of two sharps. The last two staves have a bass clef and a key signature of two sharps. The notation includes slurs, accents, and various chord markings (A, D, V).

No. 3

Song of the Wind

Handwritten musical notation for "Song of the Wind". It consists of three staves in 3/4 time with a key signature of two sharps (F# and C#). The notation includes notes, rests, and fingerings. Above the notes are letters (A, D) and numbers (1, 2, 3, 4) indicating fingerings or chords. There are repeat signs (//) and a double bar line with repeat dots at the end of the piece.

Duet

Handwritten musical notation for "Duet". It consists of three staves in 3/4 time with a key signature of two sharps (F# and C#). The notation includes notes, rests, and fingerings. Above the notes are letters (A, D) and numbers (1, 2, 3, 4) indicating fingerings or chords. There are repeat signs (//) and a double bar line with repeat dots at the end of the piece.

No. 4 Go Tell Aunt Rhody

Handwritten musical notation for the first line of the piece. It features a treble clef, a key signature of two sharps (F# and C#), and a 4/4 time signature. The notation includes a square box above the first measure, a series of notes with stems, and a final note with a fermata. Fingerings are indicated by numbers 1-4 above the notes. The notes are: G4 (finger 2), A4 (finger 2), B4 (finger 1), A4 (finger 1), G4 (finger 2), F#4 (finger 1), E4 (finger 1), D4 (finger 2), C#4 (finger 1), B4 (finger 4), A4 (finger 4), G4 (finger 3), F#4 (finger 2), E4 (finger 2), D4 (finger 1), C#4 (finger 1), B4 (finger 2), A4 (finger 2).

Handwritten musical notation for the second line of the piece. It features a treble clef, a key signature of two sharps (F# and C#), and a 4/4 time signature. The notation includes notes with stems and fingerings. Two sections are bracketed and labeled "Third Position": the first section covers measures 3-5 with fingerings 2, 2, 3, 3, 2, 1; the second section covers measures 7-9 with fingerings 2, 2, 3, 3, 2. The notes are: G4 (finger 2), A4 (finger 2), B4 (finger 3), A4 (finger 3), G4 (finger 2), F#4 (finger 1), E4 (finger 1), D4 (finger 2), C#4 (finger 1), B4 (finger 2), A4 (finger 2), G4 (finger 3), F#4 (finger 2), E4 (finger 2), D4 (finger 1), C#4 (finger 1), B4 (finger 2), A4 (finger 2).

play first line again

Handwritten musical notation for the "Duet" section of the piece. It features a treble clef, a key signature of two sharps (F# and C#), and a 4/4 time signature. The section is titled "Duet" and contains three staves of music. The notation includes notes with stems, a square box above the first measure of the first staff, and a fermata above the final note of the third staff. The notes are: G4 (finger 2), A4 (finger 2), B4 (finger 1), A4 (finger 1), G4 (finger 2), F#4 (finger 1), E4 (finger 1), D4 (finger 2), C#4 (finger 1), B4 (finger 4), A4 (finger 4), G4 (finger 3), F#4 (finger 2), E4 (finger 2), D4 (finger 1), C#4 (finger 1), B4 (finger 2), A4 (finger 2).

No. 5 O Come, Little Children

V

4 4 2 4 4 2 4 3 1 1 2

4 4

V

2 1 1 1 3 3 3 2 2 2

3 Third Position

3 2 2 2 4

Third Position

4 2 3 1 1 A

harmonic

play entire song 2 times

V Duet V

2 2 A 2 2 A 2 1 1 1 A

3 2 1 A 1 A 2 A 2 1 1 1

No. 6 May Song

□

A 2 4 A 2 A 2 1 3 4 2 A 1 A

f p

play first line again

Duet

A 1 A 2 3 3 3 2 1 1 A A 1 2 1 A

f p

No. 7 Long, Long Ago

2 3 2
Third

A A 1 2 2 3 2 4 3 2 1 3 2 1 A

2 3 2
Third

A A 1 2 2 3 2 4 3 2 1 2 1 A

f

4 3 2 1 3 2 1 A 4 3 2 1 3 2 1 A

f *p*

play second line again

Duet

No. 8 Allegro (sharp 3)

Handwritten musical score for three staves. The key signature is three sharps (F#, C#, G#) and the time signature is 4/4. The score includes various musical notations such as notes, rests, and fingerings. Above the first staff, there are chord symbols: A, A, #, A, D, D, #, #, #. Above the second staff, there are fingerings: 2, 2, 1, 2, 2, 1, 2, 3, A, 2, 1. Above the third staff, there are fingerings: 1, 1, 3, 3, 3, 2. The piece concludes with a double bar line.

Duet

Handwritten musical score for three staves, labeled "Duet". The key signature is three sharps (F#, C#, G#) and the time signature is 4/4. The score includes various musical notations such as notes, rests, and fingerings. Above the first staff, there are chord symbols: A, A, A, A, D, 1, 2, D, A, A, 1, 1, A, A, 1, 2, 1. Above the second staff, there are fingerings: D, 1, 2, D, 1, 1, D. The piece concludes with a double bar line.

No. 9 Perpetual Motion

Fast!

A 1 2 2 | 1 2 3 3 | 2 3 4 2 | 3 1 4 4 | 3 1 A A

A A 3 3 | 3 3 2 2 | A A 3 3 | 2 1 4 4 | 2 1 A A

2 A 1 1 | 3 1 2 2 | 4 2 3 2 | 3 1 2 2 | 3 1 A A

play first line again

Duet

4 | 3 2 1 | A 1 2 A | 1 | A 4 2 4 | A

f-p 3 | 3 2 | A 3 | 2 1 2 | 2

f A | 1 | 2 | 1 | 2 A 1 2 | 3 1 2 | 3 1 A

play first line again

No. 10 Allegretto Duet

①

4/4

D 1 2 2 A 3 3 1 A A 3 2 2 A 3 3 2 1 1 3

D 1 2 D 1

②

2 2 1 D D 1 3 3 2 1 2 1 D D 2 1 3 1 3

D 1 1 D 3 1

2 2 A 3 3 1 A A 3 A 3 2 1 3 2 1 2 3

D 2 D 3 1 1 1 2 3

2 2 A 3 3 1 A A 3 2 2 A 3 3 2 1 2 1

D 1 2 D 1 1 1

No. 11 Andantino Duet

2 3 A 3 2 1

①

Third Pos.
3 3 1 A 1 2 3 A

②

③

4 3 2 1 A 3 2 1

③

ritard

③

No. 12 Etude

Fast!

First staff of music in bass clef, key of D major (one sharp), and 4/4 time. It begins with a square fingering symbol (□) above the first measure. The melody consists of eighth notes: D4, E4, F#4, G4, A4, B4, C5, D5, E5, F#5, G5, A5, B5, C6, D6, E6, F#6, G6, A6, B6, C7, D7, E7, F#7, G7, A7, B7, C8, D8, E8, F#8, G8, A8, B8, C9, D9, E9, F#9, G9, A9, B9, C10, D10, E10, F#10, G10, A10, B10, C11, D11, E11, F#11, G11, A11, B11, C12, D12, E12, F#12, G12, A12, B12, C13, D13, E13, F#13, G13, A13, B13, C14, D14, E14, F#14, G14, A14, B14, C15, D15, E15, F#15, G15, A15, B15, C16, D16, E16, F#16, G16, A16, B16, C17, D17, E17, F#17, G17, A17, B17, C18, D18, E18, F#18, G18, A18, B18, C19, D19, E19, F#19, G19, A19, B19, C20, D20, E20, F#20, G20, A20, B20, C21, D21, E21, F#21, G21, A21, B21, C22, D22, E22, F#22, G22, A22, B22, C23, D23, E23, F#23, G23, A23, B23, C24, D24, E24, F#24, G24, A24, B24, C25, D25, E25, F#25, G25, A25, B25, C26, D26, E26, F#26, G26, A26, B26, C27, D27, E27, F#27, G27, A27, B27, C28, D28, E28, F#28, G28, A28, B28, C29, D29, E29, F#29, G29, A29, B29, C30, D30, E30, F#30, G30, A30, B30, C31, D31, E31, F#31, G31, A31, B31, C32, D32, E32, F#32, G32, A32, B32, C33, D33, E33, F#33, G33, A33, B33, C34, D34, E34, F#34, G34, A34, B34, C35, D35, E35, F#35, G35, A35, B35, C36, D36, E36, F#36, G36, A36, B36, C37, D37, E37, F#37, G37, A37, B37, C38, D38, E38, F#38, G38, A38, B38, C39, D39, E39, F#39, G39, A39, B39, C40, D40, E40, F#40, G40, A40, B40, C41, D41, E41, F#41, G41, A41, B41, C42, D42, E42, F#42, G42, A42, B42, C43, D43, E43, F#43, G43, A43, B43, C44, D44, E44, F#44, G44, A44, B44, C45, D45, E45, F#45, G45, A45, B45, C46, D46, E46, F#46, G46, A46, B46, C47, D47, E47, F#47, G47, A47, B47, C48, D48, E48, F#48, G48, A48, B48, C49, D49, E49, F#49, G49, A49, B49, C50, D50, E50, F#50, G50, A50, B50, C51, D51, E51, F#51, G51, A51, B51, C52, D52, E52, F#52, G52, A52, B52, C53, D53, E53, F#53, G53, A53, B53, C54, D54, E54, F#54, G54, A54, B54, C55, D55, E55, F#55, G55, A55, B55, C56, D56, E56, F#56, G56, A56, B56, C57, D57, E57, F#57, G57, A57, B57, C58, D58, E58, F#58, G58, A58, B58, C59, D59, E59, F#59, G59, A59, B59, C60, D60, E60, F#60, G60, A60, B60, C61, D61, E61, F#61, G61, A61, B61, C62, D62, E62, F#62, G62, A62, B62, C63, D63, E63, F#63, G63, A63, B63, C64, D64, E64, F#64, G64, A64, B64, C65, D65, E65, F#65, G65, A65, B65, C66, D66, E66, F#66, G66, A66, B66, C67, D67, E67, F#67, G67, A67, B67, C68, D68, E68, F#68, G68, A68, B68, C69, D69, E69, F#69, G69, A69, B69, C70, D70, E70, F#70, G70, A70, B70, C71, D71, E71, F#71, G71, A71, B71, C72, D72, E72, F#72, G72, A72, B72, C73, D73, E73, F#73, G73, A73, B73, C74, D74, E74, F#74, G74, A74, B74, C75, D75, E75, F#75, G75, A75, B75, C76, D76, E76, F#76, G76, A76, B76, C77, D77, E77, F#77, G77, A77, B77, C78, D78, E78, F#78, G78, A78, B78, C79, D79, E79, F#79, G79, A79, B79, C80, D80, E80, F#80, G80, A80, B80, C81, D81, E81, F#81, G81, A81, B81, C82, D82, E82, F#82, G82, A82, B82, C83, D83, E83, F#83, G83, A83, B83, C84, D84, E84, F#84, G84, A84, B84, C85, D85, E85, F#85, G85, A85, B85, C86, D86, E86, F#86, G86, A86, B86, C87, D87, E87, F#87, G87, A87, B87, C88, D88, E88, F#88, G88, A88, B88, C89, D89, E89, F#89, G89, A89, B89, C90, D90, E90, F#90, G90, A90, B90, C91, D91, E91, F#91, G91, A91, B91, C92, D92, E92, F#92, G92, A92, B92, C93, D93, E93, F#93, G93, A93, B93, C94, D94, E94, F#94, G94, A94, B94, C95, D95, E95, F#95, G95, A95, B95, C96, D96, E96, F#96, G96, A96, B96, C97, D97, E97, F#97, G97, A97, B97, C98, D98, E98, F#98, G98, A98, B98, C99, D99, E99, F#99, G99, A99, B99, C100, D100, E100, F#100, G100, A100, B100, C101, D101, E101, F#101, G101, A101, B101, C102, D102, E102, F#102, G102, A102, B102, C103, D103, E103, F#103, G103, A103, B103, C104, D104, E104, F#104, G104, A104, B104, C105, D105, E105, F#105, G105, A105, B105, C106, D106, E106, F#106, G106, A106, B106, C107, D107, E107, F#107, G107, A107, B107, C108, D108, E108, F#108, G108, A108, B108, C109, D109, E109, F#109, G109, A109, B109, C110, D110, E110, F#110, G110, A110, B110, C111, D111, E111, F#111, G111, A111, B111, C112, D112, E112, F#112, G112, A112, B112, C113, D113, E113, F#113, G113, A113, B113, C114, D114, E114, F#114, G114, A114, B114, C115, D115, E115, F#115, G115, A115, B115, C116, D116, E116, F#116, G116, A116, B116, C117, D117, E117, F#117, G117, A117, B117, C118, D118, E118, F#118, G118, A118, B118, C119, D119, E119, F#119, G119, A119, B119, C120, D120, E120, F#120, G120, A120, B120, C121, D121, E121, F#121, G121, A121, B121, C122, D122, E122, F#122, G122, A122, B122, C123, D123, E123, F#123, G123, A123, B123, C124, D124, E124, F#124, G124, A124, B124, C125, D125, E125, F#125, G125, A125, B125, C126, D126, E126, F#126, G126, A126, B126, C127, D127, E127, F#127, G127, A127, B127, C128, D128, E128, F#128, G128, A128, B128, C129, D129, E129, F#129, G129, A129, B129, C130, D130, E130, F#130, G130, A130, B130, C131, D131, E131, F#131, G131, A131, B131, C132, D132, E132, F#132, G132, A132, B132, C133, D133, E133, F#133, G133, A133, B133, C134, D134, E134, F#134, G134, A134, B134, C135, D135, E135, F#135, G135, A135, B135, C136, D136, E136, F#136, G136, A136, B136, C137, D137, E137, F#137, G137, A137, B137, C138, D138, E138, F#138, G138, A138, B138, C139, D139, E139, F#139, G139, A139, B139, C140, D140, E140, F#140, G140, A140, B140, C141, D141, E141, F#141, G141, A141, B141, C142, D142, E142, F#142, G142, A142, B142, C143, D143, E143, F#143, G143, A143, B143, C144, D144, E144, F#144, G144, A144, B144, C145, D145, E145, F#145, G145, A145, B145, C146, D146, E146, F#146, G146, A146, B146, C147, D147, E147, F#147, G147, A147, B147, C148, D148, E148, F#148, G148, A148, B148, C149, D149, E149, F#149, G149, A149, B149, C150, D150, E150, F#150, G150, A150, B150, C151, D151, E151, F#151, G151, A151, B151, C152, D152, E152, F#152, G152, A152, B152, C153, D153, E153, F#153, G153, A153, B153, C154, D154, E154, F#154, G154, A154, B154, C155, D155, E155, F#155, G155, A155, B155, C156, D156, E156, F#156, G156, A156, B156, C157, D157, E157, F#157, G157, A157, B157, C158, D158, E158, F#158, G158, A158, B158, C159, D159, E159, F#159, G159, A159, B159, C160, D160, E160, F#160, G160, A160, B160, C161, D161, E161, F#161, G161, A161, B161, C162, D162, E162, F#162, G162, A162, B162, C163, D163, E163, F#163, G163, A163, B163, C164, D164, E164, F#164, G164, A164, B164, C165, D165, E165, F#165, G165, A165, B165, C166, D166, E166, F#166, G166, A166, B166, C167, D167, E167, F#167, G167, A167, B167, C168, D168, E168, F#168, G168, A168, B168, C169, D169, E169, F#169, G169, A169, B169, C170, D170, E170, F#170, G170, A170, B170, C171, D171, E171, F#171, G171, A171, B171, C172, D172, E172, F#172, G172, A172, B172, C173, D173, E173, F#173, G173, A173, B173, C174, D174, E174, F#174, G174, A174, B174, C175, D175, E175, F#175, G175, A175, B175, C176, D176, E176, F#176, G176, A176, B176, C177, D177, E177, F#177, G177, A177, B177, C178, D178, E178, F#178, G178, A178, B178, C179, D179, E179, F#179, G179, A179, B179, C180, D180, E180, F#180, G180, A180, B180, C181, D181, E181, F#181, G181, A181, B181, C182, D182, E182, F#182, G182, A182, B182, C183, D183, E183, F#183, G183, A183, B183, C184, D184, E184, F#184, G184, A184, B184, C185, D185, E185, F#185, G185, A185, B185, C186, D186, E186, F#186, G186, A186, B186, C187, D187, E187, F#187, G187, A187, B187, C188, D188, E188, F#188, G188, A188, B188, C189, D189, E189, F#189, G189, A189, B189, C190, D190, E190, F#190, G190, A190, B190, C191, D191, E191, F#191, G191, A191, B191, C192, D192, E192, F#192, G192, A192, B192, C193, D193, E193, F#193, G193, A193, B193, C194, D194, E194, F#194, G194, A194, B194, C195, D195, E195, F#195, G195, A195, B195, C196, D196, E196, F#196, G196, A196, B196, C197, D197, E197, F#197, G197, A197, B197, C198, D198, E198, F#198, G198, A198, B198, C199, D199, E199, F#199, G199, A199, B199, C200, D200, E200, F#200, G200, A200, B200, C201, D201, E201, F#201, G201, A201, B201, C202, D202, E202, F#202, G202, A202, B202, C203, D203, E203, F#203, G203, A203, B203, C204, D204, E204, F#204, G204, A204, B204, C205, D205, E205, F#205, G205, A205, B205, C206, D206, E206, F#206, G206, A206, B206, C207, D207, E207, F#207, G207, A207, B207, C208, D208, E208, F#208, G208, A208, B208, C209, D209, E209, F#209, G209, A209, B209, C210, D210, E210, F#210, G210, A210, B210, C211, D211, E211, F#211, G211, A211, B211, C212, D212, E212, F#212, G212, A212, B212, C213, D213, E213, F#213, G213, A213, B213, C214, D214, E214, F#214, G214, A214, B214, C215, D215, E215, F#215, G215, A215, B215, C216, D216, E216, F#216, G216, A216, B216, C217, D217, E217, F#217, G217, A217, B217, C218, D218, E218, F#218, G218, A218, B218, C219, D219, E219, F#219, G219, A219, B219, C220, D220, E220, F#220, G220, A220, B220, C221, D221, E221, F#221, G221, A221, B221, C222, D222, E222, F#222, G222, A222, B222, C223, D223, E223, F#223, G223, A223, B223, C224, D224, E224, F#224, G224, A224, B224, C225, D225, E225, F#225, G225, A225, B225, C226, D226, E226, F#226, G226, A226, B226, C227, D227, E227, F#227, G227, A227, B227, C228, D228, E228, F#228, G228, A228, B228, C229, D229, E229, F#229, G229, A229, B229, C230, D230, E230, F#230, G230, A230, B230, C231, D231, E231, F#231, G231, A231, B231, C232, D232, E232, F#232, G232, A232, B232, C233, D233, E233, F#233, G233, A233, B233, C234, D234, E234, F#234, G234, A234, B234, C235, D235, E235, F#235, G235, A235, B235, C236, D236, E236, F#236, G236, A236, B236, C237, D237, E237, F#237, G237, A237, B237, C238, D238, E238, F#238, G238, A238, B238, C239, D239, E239, F#239, G239, A239, B239, C240, D240, E240, F#240, G240, A240, B240, C241, D241, E241, F#241, G241, A241, B241, C242, D242, E242, F#242, G242, A242, B242, C243, D243, E243, F#243, G243, A243, B243, C244, D244, E244, F#244, G244, A244, B244, C245, D245, E245, F#245, G245, A245, B245, C246, D246, E246, F#246, G246, A246, B246, C247, D247, E247, F#247, G247, A247, B247, C248, D248, E248, F#248, G248, A248, B248, C249, D249, E249, F#249, G249, A249, B249, C250, D250, E250, F#250, G250, A250, B250, C251, D251, E251, F#251, G251, A251, B251, C252, D252, E252, F#252, G252, A252, B252, C253, D253, E253, F#253, G253, A253, B253, C254, D254, E254, F#254, G254, A254, B254, C255, D255, E255, F#255, G255, A255, B255, C256, D256, E256, F#256, G256, A256, B256, C257, D257, E257, F#257, G257, A257, B257, C258, D258, E258, F#258, G258, A258, B258, C259, D259, E259, F#259, G259, A259, B259, C260, D260, E260, F#260, G260, A260, B260, C261, D261, E261, F#261, G261, A261, B261, C262, D262, E262, F#262, G262, A262, B262, C263, D263, E263, F#263, G263, A263, B263, C264, D264, E264, F#264, G264, A264, B264, C265, D265, E265, F#265, G265, A265, B265, C266, D266, E266, F#266, G266, A266, B266, C267, D267, E267, F#267, G267, A267, B267, C268, D268, E268, F#268, G268, A268, B268, C269, D269, E269, F#269, G269, A269, B269, C270, D270, E270, F#270, G270, A270, B270, C271, D271, E271, F#271, G271, A271, B271, C272, D272, E272, F#272, G272, A272, B272, C273, D273, E273, F#273, G273, A273, B273, C274, D274, E274, F#274, G274, A274, B274, C275, D275, E275, F#275, G275, A275, B275, C276, D276, E276, F#276, G276, A276, B276, C277, D277, E277, F#277, G277, A277, B277, C278, D278, E278, F#278, G278, A278, B278, C279, D279, E279, F#279, G279, A279, B279, C280, D280, E280, F#280, G280, A280, B280, C281, D281, E281, F#281, G281, A281, B281, C282, D282, E282, F#282, G282, A282, B282, C283, D283, E283, F#283, G283, A283, B283, C284, D284, E284, F#284, G284, A284, B284, C285, D285, E285, F#285, G285, A285, B285, C286, D286, E286, F#286, G286, A286, B286, C287, D287, E287, F#287, G287, A287, B287, C288, D288, E288, F#288, G288, A288, B288, C289, D289, E289, F#289, G289, A289, B289, C290, D290, E290, F#290, G290, A290, B290, C291, D291, E291, F#291, G291, A291, B291, C292, D292, E292, F#292, G292, A292, B292, C293, D293, E293, F#293, G293, A293, B293, C294, D294, E294, F#294, G294, A294, B294, C295, D295, E295, F#295, G295, A295, B295, C296, D296, E296, F#296, G296, A296, B296, C297, D297, E297, F#297, G297, A297, B297, C298, D298, E298, F#298, G298, A298, B298, C299, D299, E299, F#299, G299, A299, B299, C300, D300, E300, F#300, G300, A300, B300, C301, D301, E301, F#301, G301, A301, B301, C302, D302, E302, F#302, G302, A302, B302, C303, D303, E303, F#303, G303, A303, B303, C304, D304, E304, F#304, G304, A304, B304, C305, D305, E305, F#305, G305, A305, B305, C306, D306, E306, F#306, G306, A306, B306, C307, D307, E307, F#307, G307, A307, B307, C308, D308, E308, F#308, G308, A308, B308, C309, D309, E309, F#309, G309, A309, B309, C310, D310, E310, F#310, G310, A310, B310, C311, D311, E311, F#311, G311, A311, B311, C312, D312, E312, F#312, G312, A312, B312, C313, D313, E313, F#313, G313, A313, B313, C314, D314, E314, F#314, G314, A314, B314, C315, D315, E315, F#315, G315, A315, B315, C316, D316, E316, F#316, G316, A316, B316, C317, D317, E317, F#317, G317, A317, B317, C318, D318, E318, F#318, G318, A318, B318, C319, D319, E319, F#319, G319, A319, B319, C320, D320, E320, F#320, G320, A320, B320, C321, D321, E321, F#321, G321, A321, B321, C322, D322, E322, F#322, G322, A322, B322, C323, D323, E323, F#323, G323, A323, B323, C324, D324, E324, F#324, G324, A324, B324, C325, D325, E325, F#325, G325, A325, B325, C326, D326, E326, F#326, G326, A326, B326, C327, D327, E327, F#327, G327, A327, B327, C328, D328, E328, F#328, G328, A328, B328, C329, D329, E329, F#329, G329, A329, B329, C330, D330, E330, F#330, G330, A330, B330, C331, D331, E331, F#331, G331, A331, B331, C332, D332, E332, F#332, G332, A332, B332, C333, D333, E333, F#333, G333, A333, B333, C334, D334, E334, F#334, G334, A334, B334, C335, D335, E335, F#335, G335, A335, B335, C336, D336, E336, F#336, G336, A336, B336, C337, D337, E337, F#337, G337, A337, B337, C338, D338, E338, F#338, G338, A338, B338, C339, D339, E339, F#339, G339, A339, B339, C340, D340, E340, F#340, G340, A340, B340, C341, D341, E341, F#341, G341, A341, B341, C342, D342, E342, F#342, G342, A342, B342, C343, D343, E343, F#343, G343, A343, B343, C344, D344, E344, F#344, G344, A344, B344, C345, D345, E345, F#345, G345, A345, B345, C346, D346, E346, F#346, G346, A346, B346, C347, D347, E347, F#347, G347, A347, B347, C348, D348, E348, F#348, G348, A348, B348, C349, D349, E349, F#349, G349, A349, B349, C350, D350, E350, F#350, G350, A350, B350, C351, D351, E351, F#351, G351, A351, B351, C352, D352, E352, F#352, G352, A352, B352, C353, D353, E353, F#353, G353, A353, B353, C354, D354, E354, F#354, G354, A354, B354, C355, D355, E355, F#355, G355, A355, B355, C356, D356, E356, F#356, G356, A356, B356, C357, D357, E357, F#357, G357, A357, B357, C358, D358, E358, F#358, G358, A358, B358, C359, D359, E359, F#359, G359, A359, B359, C360, D360, E360, F#360, G360, A360, B360, C361, D361, E361, F#361, G361, A361, B361, C362, D362, E362, F#362, G362, A362, B362, C363, D363, E363, F#

BACH MINUET No. 2

The image shows a handwritten musical score for "BACH MINUET No. 2". The score is written on ten staves, each with a treble clef and a key signature of one sharp (F#). The time signature is 3/4. The notation includes notes, rests, and various performance markings. Fingerings are indicated by numbers 1-3. Dynamics include 'f' (forte) and 'p' (piano). Articulation marks like 'V' (accents) and 'D' (dotted lines) are present. There are also some handwritten corrections or additions, such as a sharp sign above a note in the fifth staff and arrows pointing to notes in the sixth staff. The score concludes with a double bar line and repeat dots.

No. 16 The Happy Farmer

Handwritten musical notation for the first system. It features a treble clef, a key signature of one sharp (F#), and a 4/4 time signature. The melody consists of quarter and eighth notes. Fingerings are indicated by numbers 1, 2, 3, and 4. Accents are marked with 'V' and 'π'. The notes are G, A, B, C, D, E, F#, G.

1 G 2 D G 3 1 3 1 D 2 3 1 3 2 G 2

Handwritten musical notation for the second system. It continues the melody with a repeat sign (γ) and a double bar line. The notes are D, E, F#, G, A, B, C, D. Fingerings include circled numbers like #3. Accents are marked with 'V' and 'π'.

#3 2 1 D 2 1 A D 2 1 A 3 A D

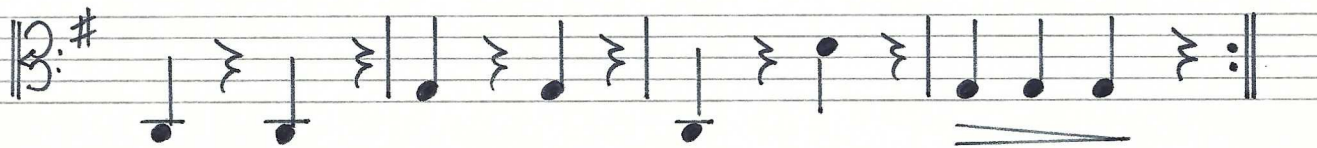
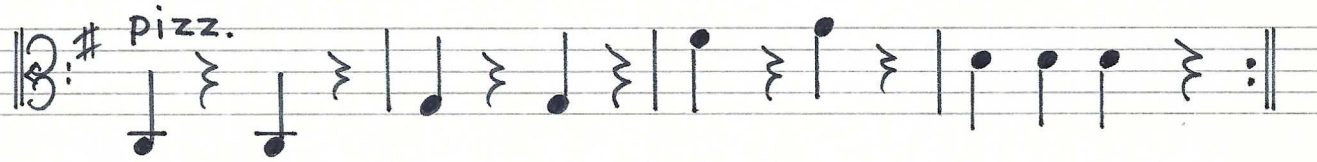
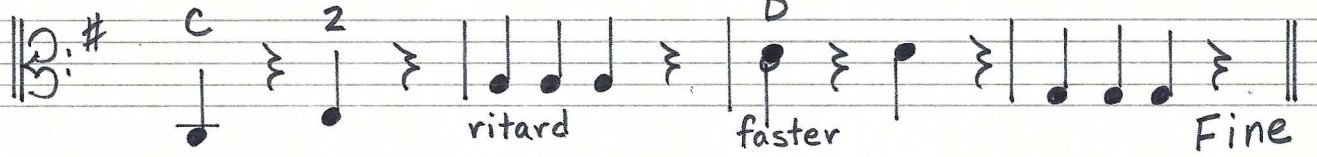
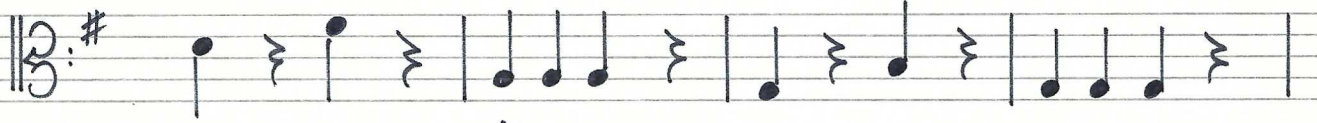
Handwritten musical notation for the third system. It continues the melody with a repeat sign (γ) and a double bar line. The notes are G, A, B, C, D, E, F#, G. Fingerings and accents are consistent with the previous systems.

G 2 D G 3 1 3 1 D 2 3 1 3 2 G 2

Handwritten musical notation for the fourth system. It concludes the piece with a final note G, a circled #3, and a repeat sign (γ) with a double bar line.

1 #3 G γ

No. 17 Gavotte by Gossec (harmony)
pizzicato



D.C. al Fine

Berceuse by Schubert $\text{♩} = \frac{100}{112}$

Handwritten musical score for Schubert's Berceuse. The score is written on five staves in G major (one sharp) and 3/4 time. The first staff begins with a piano (*p*) dynamic. The second staff includes a *v* (accents) marking. The third staff has a repeat sign. The fourth staff also includes a *v* marking. The fifth staff is a bass line consisting of three chords on D (triplets) and one chord on G (triplets), with the text "harmonic on D" and "on G" written below. The piece concludes with a double bar line.

Allegro by Brevi

Handwritten musical score for Allegro by Brevi. The score is written on five staves in G major (one sharp) and 4/4 time. The first staff starts with a forte (*f*) dynamic and includes fingering numbers: 3, 4 3 2 3, 3 2 3 4, 2 3 4 2 0. The second staff includes a *v* marking and fingering numbers: #3, 4 3, #. The third staff includes a *p* dynamic, a repeat sign, and the text "low 2". The fourth staff includes the text "first line only, then:" and a *mf* dynamic. The fifth staff includes a *mf* dynamic and a repeat sign. The piece concludes with a double bar line.

Gigue by Bach $\text{♩} = 88$

Handwritten musical notation for the first line of the Gigue by Bach. It is in 3/8 time with a key signature of one sharp (F#). The notation includes fingerings (0, 3, 2, 3, 0, 3, 0, 1), accents (v), and a circled '2' above a note. The line ends with a double bar line and repeat dots.

Handwritten musical notation for the second line of the Gigue by Bach. It includes dynamics *f* and *p*, accents (v), and a *p (echo)* instruction. The notation shows eighth notes and quarter notes.

play first line ONCE, then

Handwritten musical notation for the third line of the Gigue by Bach. It includes dynamics *p* and *p (echo)*, accents (v), and a *p (echo)* instruction. The notation shows eighth notes and quarter notes.

play first line again

Rigadoon by Purcell

Handwritten musical notation for the first line of the Rigadoon by Purcell. It is in 4/4 time with a key signature of one sharp (F#). The notation includes a dynamic *mf* and a *p* accent. The line ends with a double bar line.

Handwritten musical notation for the second line of the Rigadoon by Purcell. It includes a *p* accent and a *Fine* instruction. The notation ends with a double bar line and repeat dots.

Handwritten musical notation for the third line of the Rigadoon by Purcell. It includes a *low* instruction and a '2' in a box. The notation ends with a double bar line and repeat dots.

Handwritten musical notation for the fourth line of the Rigadoon by Purcell. It includes a dynamic *mf* and an accent (v). The notation ends with a double bar line.

Handwritten musical notation for the fifth line of the Rigadoon by Purcell. It includes a *D.C. al Fine* instruction. The notation ends with a double bar line and repeat dots.

D.C. al Fine